

Senior School Prospectus

LeicesterHigh
SCHOOL
FOR GIRLS





"LHS girls are taught there are no limits to what they can achieve and our School ethos of providing girls with education, confidence and opportunity permeates all we do."

Mr Alan Whelpdale, Headteacher

OUR VISION

To provide an exceptional and 'boutique' all-round education which will prepare our students for happy and fulfilling lives, and, therefore, during their years with us creating memories that will last a life-time.



Welcome from the Headmaster

I'm delighted you are considering Leicester High School's Senior School for your daughter's education. As an all girls' School, we have been inspiring girls since 1906 and we are specialists in girls' education. From our Early Years Unit through to our outstanding Sixth Form, our girls are fully supported to achieve their ambitions.

LHS girls are taught there are no limits to what they can achieve and our School ethos of providing girls with education, confidence and opportunity permeates all we do.

Unusually, our Senior School starts at Year 6, when our Junior Department girls join the Senior School and we believe there is true value in this extra year of secondary education. However, girls will join us at all Year groups, with a large cohort joining in Year 7, and we are well prepared to support your daughter's transition into LHS.

Our academic results speak for themselves, with 97% of our GCSE grades in 2021 being 7-9 (A*-A) and 77% of our A Level grades being at A*.

However, we truly believe that there is more to your daughter's time at LHS than academic results. We offer a huge range of extracurricular clubs and activities, alongside trips and visits to ensure your daughter receives a fully-rounded School experience.

Our small size means that everyone is someone at LHS and I am as proud of our excellent Pastoral Care as of our academic successes. Our Pastoral structure includes your daughter's form tutor, Heads of Year and our School Nurse. We believe strongly that the girls learn best when they are happy and supported during their time at School.

I hope you find the information you need about our Senior School within this Prospectus. However, I recommend all potential families visit us in person to get a real feel for what makes LHS so special.

I very much look forward to meeting you,

Mr Alan Whelpdale



Year 6 - The LHS Way

Why do we think Year 6 is so special?

At LHS, we see Year 6 differently. Rather than the end of one stage of education, we see it as the natural continuation into the next. Because of this, girls join our Senior School in Year 6, allowing them to gain an additional year of the secondary curriculum.

Building on the sense of curiosity she has developed during her primary years is key to our ethos for ensuring your daughter makes the most of her abilities. Owing to this, we don't undertake SATS in Year 6. We believe that, at this age, building a love of learning is key to later academic success. By allowing the girls to focus on a full range of subjects, we ensure we get the best out of your daughter, and she gets the best out of her school experience. At LHS, we see this as more important than measuring her ability to do well in an examination.

We provide your daughter with the benefits of the specialist teaching spaces and staff in the Senior School, combined with a structured approach to wellbeing and support, through a full year of transition activities, designed in collaboration with our Junior Department. This holistic approach is based on our understanding that academic excellence must go hand-in-hand with outstanding pastoral care in order for our girls to achieve their potential.

How does Year 6 work at LHS?

Rather than just conducting transition activities in the Summer Term, we treat the whole of Year 6 as transitional. Year 6 girls undertake an Induction Day over the Summer, where they have the opportunity to get to know the Senior School, meet their Head of Year and Form Tutor, and, perhaps most importantly, spend time with their classmates, building their friendships through a series of teamwork activities.

Year 6 have their own Form Room within the Senior School building. This also acts as their classroom for the majority of their subjects. Where a subject requires specialist teaching equipment, such as Science, Art or Computing, they will access the specialist teaching rooms, ensuring they benefit from the excellent teaching facilities LHS has to offer.

We understand the importance of play for building skills and confidence – as well as for burning off excess energy! Year 6 girls are therefore able to use the recently refurbished Junior Playground during break and lunchtimes. They also have access to the full range of extracurricular activities the Senior School has to offer.

At LHS, we believe that everyone is someone and this shines through in our excellent pastoral support. As well as support from their Form Tutor, Head of Year and the School Nurse, Year 6 girls will attend some Junior Department assemblies.

During the Summer Term of Year 6, once they are familiar with the Senior School buildings and timetable, the girls will begin to travel to their subject-specific classrooms for every lesson and become fully-integrated into the Senior School.

Outstanding pastoral care has never been more important than it is now. We believe the LHS approach to Year 6 offers the best possible provision: access to Senior School teaching and facilities, and excellent levels of pastoral support, which recognises the specific needs of your daughter.

Life in the Senior School

Our Senior School provides education for girls from Year 6 through to Year 11, when the majority of girls choose to join our excellent Sixth Form.

The Senior School is based partly in the School's original Portland House building and partly in the newest part of the School - a significant extension completed in 2010. The building has six science laboratories, a languages computer suite, drama/dance studio, gym, library, art and design studio, food studies room and IT suites, all set around an award-winning courtyard garden. Our Davé Family Music Centre was opened in 2019 and provides a fantastic space for musical practice, teaching and performance.

The Senior School provides excellent facilities, whilst maintaining the School's character and the homely feel, which is part of what makes LHS so special.

Our curriculum is designed to challenge and interest the girls and we are also very proud of our extracurricular provision, which includes clubs, trips and visits and the opportunity to undertake the Duke of Edinburgh Award.



Mia's Profile

My favourite thing about LHS is the warm and welcoming community.

We also take part in lots of charity events as a School. Each year we support specific charities, as well as supporting charity events such as Red Nose Day and Children in Need.

My favourite moment of LHS so far has been The Tenner Challenge we do in Careers. You are given ten pounds and need to choose how to use it to make as much profit as possible. It gets really competitive, even though it isn't a competition! I'm giving half of my profit to Cancer Research UK.





Pastoral Care

We pride ourselves on fully supporting each individual girl during her time at LHS.

Pastoral Aims

Our Pastoral aims are consistent with, and reinforce, the ethos and aims of the School.

- to create an atmosphere in which all pupils feel confident that they are well known, safe, valued and respected
- to enable and encourage all pupils to take full and equal advantage of the educational opportunities offered
- to give pupils the basic skills and flexibility to succeed in a rapidly changing society
- to ensure pupils are given a balanced presentation of opposing views in a bid to preclude the promotion of partisan views eg political, racial, sexual, gender, disability, religion or belief.
- to create active, responsible members of society
- to enable pupils to become progressively responsible for their personal and social development, their health and academic education and their career decisions
- to contribute towards furthering the maintenance of good behaviour and an orderly atmosphere in the School
- to offer sympathetic, confidential and effective guidance and counselling to pupils where appropriate
- to work in partnership with parents
- to contribute towards strengthening the links between the community and the School
- to promote actively the physical and mental well-being of pupils

Pastoral Structure

In the Senior School, each girl is assigned a tutor group and will be supported by their Form Tutor and, if required, their Head of Year with any academic or personal issues which arise.

They may also be referred for additional support from our SEND Co-ordinator or School Nurse.

The School Nurse

Our fully-trained School Nurse is responsible for supporting and caring for all the girls on all health matters.

Along with general health matters, she undertakes a wide variety of tasks from the taking out stitches to the taking of blood, which can be helpful to parents when it is difficult taking time off work to take their daughters to their GP.

She has an open-door policy for parents, as well as the girls, and she finds it very helpful to get emails and calls from parents - no matter how trivial a matter may seem.





"The small class size means the teachers really get to know you – what you are good at and where you need help. Attending this small and friendly School has made me confident to be the best I can be."



Our Curriculum

At LHS, we know there is more to education than passing on information and passing examinations. Girls are encouraged to broaden their minds and develop their intellectual curiosity.

We bring learning to life through visits, speakers and cultural experiences, allowing our girls to develop their skills and knowledge, alongside a love of learning.

We provide a wide range of learning support to ensure every girl achieves their potential at LHS.

We offer a wide range of subjects in our Senior School:

- **Art** - Years 6 - 9 and available as an option at GCSE and A Level
- **Biology** - Years 7 - 9 (Taught as Science in Year 6) and as part of Single/Double Award Science or an individual GCSE. Available as an option at A Level.
- **Business Studies** – Available as an option at A Level
- **Chemistry** - Years 7 - 9 (Taught as Science in Year 6) and as part of Single/Double Award Science or an individual GCSE. Available as an option at A Level.
- **Computer Science** - Years 6 - 9 and available as an option at GCSE
- **Dance** - Years 6 - 9
- **Drama** - Years 6 - 9 and available as an option at GCSE and A Level
- **English** - Year 6 - 9 and as a core subject at GCSE. English Literature is available as an option at A Level
- **Food Studies** - Years 6 - 9. Food Preparation and Nutrition is available as an option at GCSE
- **French** - Years 6 - 9 and as an option at GCSE and A Level
- **Geography** - Years 6 - 9 and as an option at GCSE and A Level
- **History** - Years 6 - 9 and as an option at GCSE and A Level
- **Mathematics** - Years 6 - 9 and as a core subject GCSE, alongside Further Pure Mathematics.

Mathematics and Further Mathematics are available as options at GCSE and A Level

- **Music** - Years 6 - 9 and as an option at GCSE and A Level
- **Personal, Social, Health and Citizenship (PSHCE)** - Years 6 - 9 and as a non-examination subject at GCSE and in the Sixth Form
- **Physical Education (PE)** - Years 6 - 9.
- **Philosophy and Belief** - Years 6 - 9 and as an option subject at GCSE and at A Level
- **Photography** - Available as an option at A Level
- **Physics** - Years 7 - 9 (Taught as Science in Year 6) and as part of Single/Double Award Science or an individual GCSE. Available as an option at A Level.
- **Psychology** - Available as an option at A Level
- **Science** - Year 6 and as separate Biology, Chemistry and Physics from Year 7
- **Sociology** - Available as an option at A Level
- **Spanish** - Years 8-9 and available as an option at GCSE and A Level





Remote Learning at LHS

We would like to reassure our parents and girls that we will continue to provide a high-quality and robust education, whatever circumstances we may face.

Remote learning will immediately be provided in circumstances where your daughter cannot attend School due to self-isolation. This will follow the usual School timetable to ensure your daughter's learning is uninterrupted.

In our Senior School, teaching staff will set work for each lesson by 9am each day, via our online Show My Homework system.

Feedback will be given verbally, or work will be marked and returned to enable you, and us, to keep track of how your daughter is progressing.

Pastoral support will continue to be provided through contact with your daughter's Form Tutor and Head of Year. Our School Nurse is also available to answer any queries or concerns through email, telephone or Teams meetings.



GCSEs

Your GCSEs are an important and exciting stage in your School career. Many subjects will start to cover GCSE content in Year 9, before girls start officially to study them in Year 10. Examinations take place at the end of Year 11.

We are very proud of the achievements of our girls at GCSE, with examination results well above the national average.

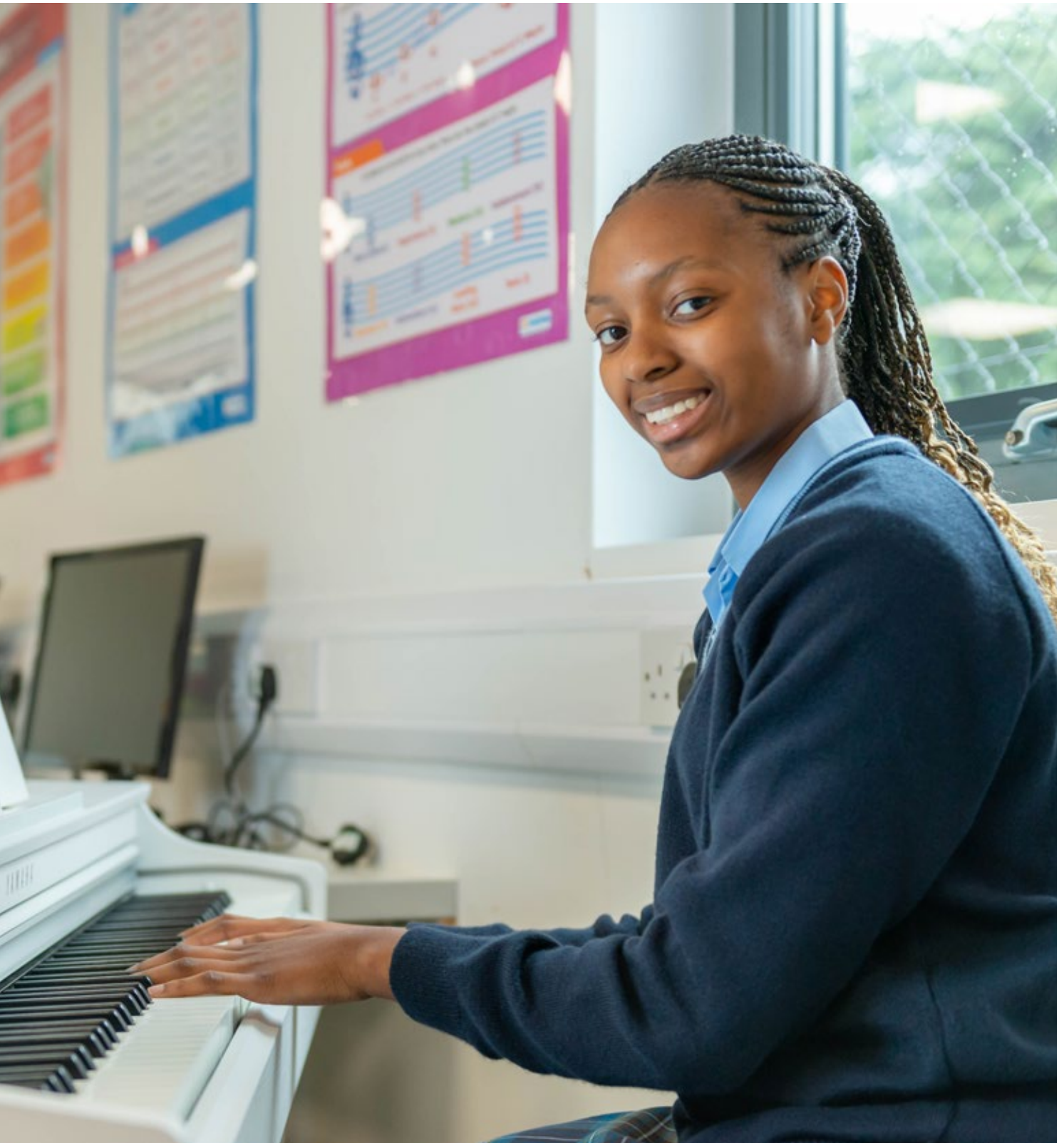
Most girls at LHS will study 7-10 subjects at GCSE level, with all girls studying:

- English language
- English literature
- Mathematics
- Sciences (single/double award or three separate sciences - Biology, Chemistry and Physics)

The girls also have lessons in non-examination courses in Physical Education and Personal, Social, Health, Citizenship and Economic (PSHCE) well-being education. They then choose four further subjects.

We understand that making these choices may feel daunting for some. We hold a series of events during Year 9 to help understanding of what studying a subject at GCSE entails. Our teaching staff and the Head of Years 10 - 11 are also always on hand to provide advice and support during the decision-making process.







Careers

Our Careers Department co-ordinates an extensive programme of visits, speakers and events each year, alongside UCAS application support, psychometric testing, work experience and mock interviews, as well as taught sessions which form part of the PSHCE programme for Years 6-11. Weekly Careers drop-in sessions take place throughout the academic year.

Support is tailored to your daughter's stage in her education and to helping her to achieve her career ambitions.

A Medics Club runs for students in any year group who are considering a career in Medicine.

Years 6 and 7

We ensure girls' horizons are broadened with access to a range of talks and visits about diverse careers, including engineering and becoming a pilot.

Girls in Year 7 take part in the national Take Your Daughters to Work Day and this is followed up by activity in PSHCE.

Years 8 and 9

Girls find out more about various careers and entrepreneurship is encouraged through involvement in the Tenner Challenge. Entry into national competitions also takes place, with several successes.

External speakers, including LHS Alumnae, attend the School on a regular basis to provide careers talks, workshops and to be panel members.

Years 10 and 11

Careers activity at this stage focuses on identifying and building girls' strengths, as well as introducing the University application process.

Further opportunities for entrepreneurship are provided and girls have been involved in the Young



Enterprise Scheme, setting up and running their own business.

Job application experience is provided in Year 11 through PSHCE and girls also undertake My Future Choice testing to identify routes into their desired careers. The profiles created from this testing are used to inform activity in PSHCE.

Years 10 and 11 use Unifrog and Start Profile, alongside other careers resources, to help to identify possible future careers paths.

Trips to universities, including Oxbridge and to University fairs, take place in Years 10 and 11 to help the girls in identifying suitable courses and institutions to match their interests.

Sixth Form

Support is provided for choosing a University and a course through trips to universities, including those in the Russell Group. Those girls hoping to become medics are provided with mock interviews and workshops, as well as talks about applying to and studying Medicine and life as a doctor.

Sixth Formers have access to Unifrog which helps them to gather all of the supporting information for their University applications into one place, including their personal statements and references.



Extracurricular

We are very proud of the range of opportunities we offer our girls outside of the classroom.

Our Extracurricular timetable changes each term, but may include:

- Athletics
- Cheerleading
- Drama
- Health and Fitness
- Mandarin
- Photography
- Subject Aids
- Trampoline
- Art
- Choir
- Football
- High Jump
- Orchestra
- Rugby
- Tennis
- Walking Club

These activities take place at before and after School and at lunchtime. We also offer a wide range of trips and visits and our very popular Duke of Edinburgh Award.

Activities, Trips and Visits

We offer a huge range of opportunities for Senior Girls to attend a range of trips and residential during their time with us. Trips vary each year, but recent trips have included:

Years 6 and 7

- Residential Bonding Trip for Year 6 Students
- Theatre Trips for Years 6 to 13 Students

- Pitt Rivers Museum Art Trip for Year 6 Students
- Twycross Zoo Trip for Year 7 Biology Students

Years 8 and 9

- Normandy Residential for French Students
- Theatre Trips for English and Drama
- Art Gallery Visits
- National Justice Museum

GCSE

- Crandale Residential Trip for GCSE and A Level Biology Students
- London Transport Museum Trip for GCSE Art Students
- Bletchley Park Trip for GCSE and A Level Computing and History Students
- Birmingham Concert Trip for GCSE and A Level Music Students

Sixth Form

- 'The Secret River' Theatre Trip for A Level English Literature Students
- History Conference in London for A Level History Students
- Psychology Conference in Birmingham for A Level Psychology Students
- Sociology Conference in Birmingham for A Level Sociology Students



Duke of Edinburgh Award

In the Senior School, most of the girls take the Duke of Edinburgh Award (DofE) at Bronze level, and very high proportions go on to take Silver and Gold.

This Award is highly regarded and valued by UCAS and employers alike, who recognise it as the rigorous test of endurance it undoubtedly is.

More importantly, it builds the girls' confidence in themselves and each other. It also gives them the opportunity to develop life-skills, such as team work, organisation, self-reliance and inter-personal skills through the service, physical and skill sections.



Sammy's Profile

I started off with Adventure Service Challenge in Year 8 and initially thought I would not like it. I had this idea that camping and walking would not be for me, but after being encouraged thoroughly from both my teachers and my peers, I managed to complete it!

I decided that if I enjoyed Adventure Service Challenge, I would attempt D of E and I can honestly say 4 years later, it was the best choice I ever made. The mental challenge of D of E as a whole, excluding the walking and camping, was hard but now having done Silver and Bronze and now ready to complete Gold award, having a great team behind you that brings up the team spirit helps massively.

I have made lifelong friends and definitely memories that will stick with me for a long time! The moments that my friends and I have shared together have been unforgettable and I can say that doing Dof E has not only helped my confidence, team work and patience, it has also helped me to take in the beauty of D of E, which no one ever thinks about!

Such as the excitement I experience every time I successfully manage to cook the pasta perfectly, or every time I accurately map read and most of all every time we as a group successfully complete an expedition! D of E is an experience that you will never forget.

"I have made lifelong friends and definitely memories that will stick with me for a long time!"

Sammy



Joining Us

As a first step, we recommend anyone planning to join the School visits us. We have Open Days at set dates during the year. However, you are welcome to arrange a personal visit outside of these times – either instead of, or in addition to, attending an Open Day.

Once you have decided that you would like to progress with an application, you need to register your daughter for an assessment. Details of how to apply can be found on our website www.leicesterhigh.co.uk/joining-us

The Entrance Examination

All girls joining us need to be assessed via our Entrance Examination before an offer of a place can be made.

We have a set day in January for our Entrance Examination. If you wish to be considered for the Headmaster's Scholarships for entry into Year 7, your daughter will need to attend on that day. However, we also assess girls at other points during the year and will be able to advise on the best date when you contact us.

The Entrance Examination for Years 6 – 10 takes place in the morning and lasts just under 4 hours. The Examination is set at a level appropriate to age of entry. However, all of the Examinations follow the same format:

- An English paper consisting of a reading task and a piece of extended writing.
- A Mathematics examination designed to provide the opportunity to demonstrate ability in Mathematics.

Example English and Maths papers can be downloaded from our website at www.leicesterhigh.co.uk/entranceexam





#weareLHS

454 London Road
Leicester
LE2 2PP

Telephone: +44 (0)116 270 5338
Email: enquiries@leicesterhigh.co.uk

 @LeicesterHigh  @leicesterhighlhs  @LeicesterHigh

www.leicesterhigh.co.uk

LeicesterHigh
SCHOOL
FOR GIRLS



The information in this prospectus was correct at the time of print (September 2021) and is subject to change.

